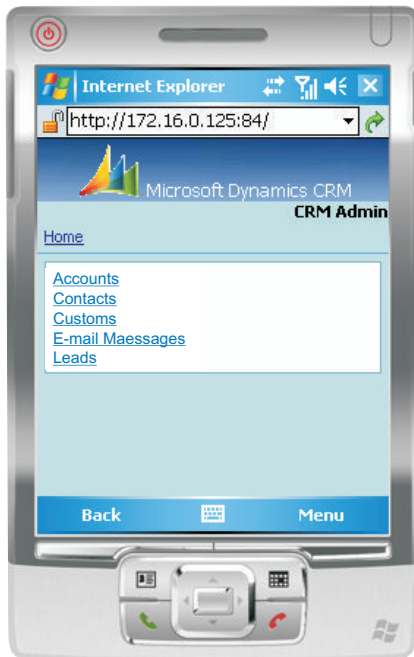




Mobile CRM Solutions for Windows Mobile

To be successful in today's competitive market place, enterprises must seamlessly improve interaction and extend information beyond the walls of their organization. ZSL's end-to-end enterprise mobile solutions makes it real time possible giving business managers significant advantage of remote and instant access to information from anywhere, anytime. Our Mobile CRM solution for Windows Mobile delivers a rich user experience and drives overall usage of your CRM system by enabling remote access for your sales, service and management teams.



ZSL's Mobile CRM solutions help the business users using CRM application to increase sales and service effectiveness at every stage of the sales cycle, say, from leads and opportunities management to fulfilment and invoicing via their Windows Mobile. It provides your sales force with access to powerful and required information making activity management less agonizing process and more serene, while enabling business managers to view critical data and for perusal to resolve issues immediately even on move before back to work desk.

The CRM custom business applications are developed in MS.NET using web services, powered by SOAP and WSDL, compatible with Windows Mobile client, where the business process interaction are done by XML Web Services.

Key feature of windows mobile CRM

View Sales Entities

Our Mobile CRM solution is a complete end-to-end solution for business managers seamlessly satisfying their sales management requirements. It features to display all the sales related entities — Lead, Opportunity, Account, Finance, Contacts, Marketing Lists, Competitors, Products where the sales personnel can navigate to the respective entity and get the required information.

View Leads and Lead Details

ZSL's Mobile CRM solution keeps the enterprise sales personnel connected online to lead data and sales information via handy Windows Mobile device thus ruling out the business stalemate due to any information lack.

Alert and Qualify

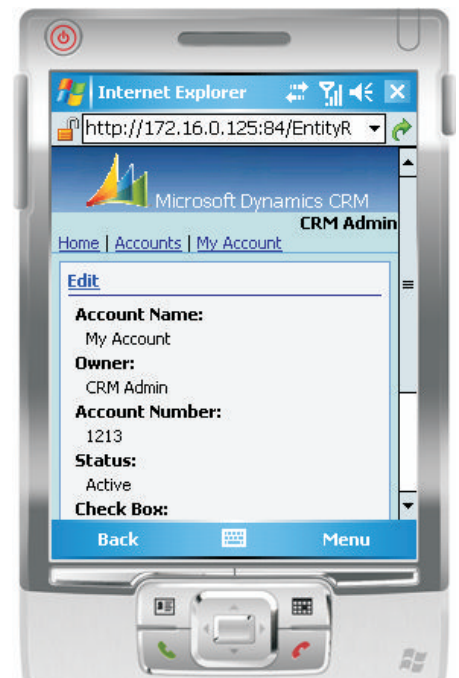
Our Mobile CRM solution for enterprises provides their business manager, on fly, an advantageous position of surfing lead details in handheld Windows Mobile device and responding to queries related to lead, thus ensuring timely response to prospect concerns and scaling down the probability of prospect turning to your competitor. It enables the business users to instantly analyse and qualify a lead for further progressing sales activities even while located beyond the organization ramparts.

Create and Update

The feasibility of creating and appending serendipitous lead details and instantly logging on-going activities substantiates our value added mobile solution for enterprises minimizing the onerous after-the-fact reporting for business managers.

Resolve

Addressing and resolving issues have to be top precedence for business managers to serve the customers best; in reality is also the prime face of best business practices to promote business for which they require access to right information at right time. ZSL's dynamic end-to-end mobile solution satisfies the needs of the business users to get information on hand, provide face-to-face resolution and quick progress intimation to team through quick email note or phone call, all of which are real time possible through remote accessing custom-fit CRM application through personalized handheld Windows Mobile device.





Delegate and Escalate

Our Mobile CRM solution leverages the interaction between the business managers who are on quick fly and remotely located peers/team members making it possible for business managers to transfer the files, assign leads and service cases to their peers/team members ensuring for non-intermittent progress of on-day activities and serving the customer on time to the fullest.

Benefits

- Access to remotely located data on fly
- Cost effective solution using advanced technologies
- Keep connected online with remotely located or on move team members and colleagues thereby enhanced interaction among team members across the organization
- Quick customer response and immediate attention to customer queries
- Improved business performance by timely response to a lead, promoting for high conversion rate from lead or prospect to customer
- Data update and status update to remotely located application server
- Rapid implementation at surprisingly low cost investment

About ZSL

ZSL Inc, is a global technology integrator and solution provider based in Edison, NJ with more than 2000 employees worldwide focused in developing and delivering enterprise IT solutions and services using the emerging technology platforms to keep the TCO low and ROI high. ZSL is a pioneer in business and technology solutions, innovations, has expertise in providing Onshore, Offshore & Near shore technology solutions and services to the enterprises worldwide.

We're happy to announce that ZSL recently awarded position #34 in Everything Channel's CRN Fast Growth 100 list and ranked 238th among North America's Top 500 Technology Integrators in VARBusiness 500 list and also won "Top Technology Practices" Award for Excellence in "Greenware Computing". ZSL has been recognized as one of the 10 Fast Growth VARs to watch. Visit www.zslinc.com to explore more about ZSL and its offerings.

ZSL's Other Mobility Solution Offerings

- **Google Android (G1) CRM** — Provides business managers the rich user experience and benefits of CRM by giving them access to the remotely located CRM application through handheld Google Android (G1) device.
- **iPhone CRM** — Provides business managers the rich user experience and benefits of CRM by giving them access to the remotely located CRM application through handheld iPhone device.
- **Blackberry CRM** — Provides business managers the rich user interactive activities and information exchange done through the application deployed in the handheld mobile device.
- **Work Force Automation** — Mobile solution for field work force management to create and allocate job tickets to the remotely located work force, instant track on job status—all the interactive activities and information exchange done through the application deployed in the handheld mobile device.
- **Z*Connect** — Mobile Messaging Platform to deliver alerts and notifications to any wireless device using Short Messaging Service (SMS) or Multi Media Messaging Service (MMS).

Solution and Services Portfolio

