

## GP 10.0 Sales Order Entry from web



### The Business Need

To be successful in today's competitive marketplace, organizations must extend information beyond the walls of their organization and seamlessly interact with customers, partners, and employees in real time. Organizations need to transform valuable enterprise data into shared information for insightful, timely decisions at a lower total cost of ownership. Microsoft Dynamics GP (formerly Microsoft Great Plains) is a comprehensive business-management solution built on highly scalable and affordable platform of Microsoft technologies. It offers a cost-effective solution for managing and integrating finances, e-commerce, supply chain, manufacturing, field service, customer relationships and human resources. Client required all the inventory details in GP should be displayed in the web, customer/user should be able to create an order by selecting the required items, the quantity, and order made should be updated in GP. Client required a solution to automate the process of creating sales order from an inventory list outside GP. Automating this process will eliminate the work of the user and data's will get updated automatically in GP.

### The Benefits

- *No More manual entry into GP*
- *Save huge time when creating an order*
- *Link multiple web site forms to CRM to create order*
- *Automated Sales order Processing*

## The Evaluation Process

Client evaluated many software solution providers. While each solution had some advantages, but client's requirement was not met. Cost of installation and ongoing monthly fees proved prohibitive with other solution. Client was presented with a solution that met its needs. Among other companies, client found that ZSL was a perfect match for their requirements. ZSL's extensive experience in delivering high availability solutions made client to recognise our solution and believe that would provide a thorough assessment of their environment and give them peace-of-mind about its long-term reliability – which other solutions couldn't provide.

## The Solution

Sales order entry is designed and developed to provide a complete solution for sales order operations. It optimizes and automates many of the tasks, greatly reducing the amount of time. Using 'Sales Order Processing' mechanism, inventory details is transferred from GP to web & web to GP, customer details, item details & price details will be pulled from GP and will be displayed in the website user interface, user/customer can generate a sales order from the remote location and by implementing our solution, user can update the order in GP. This is an effective way to communicate with website & Great Plains

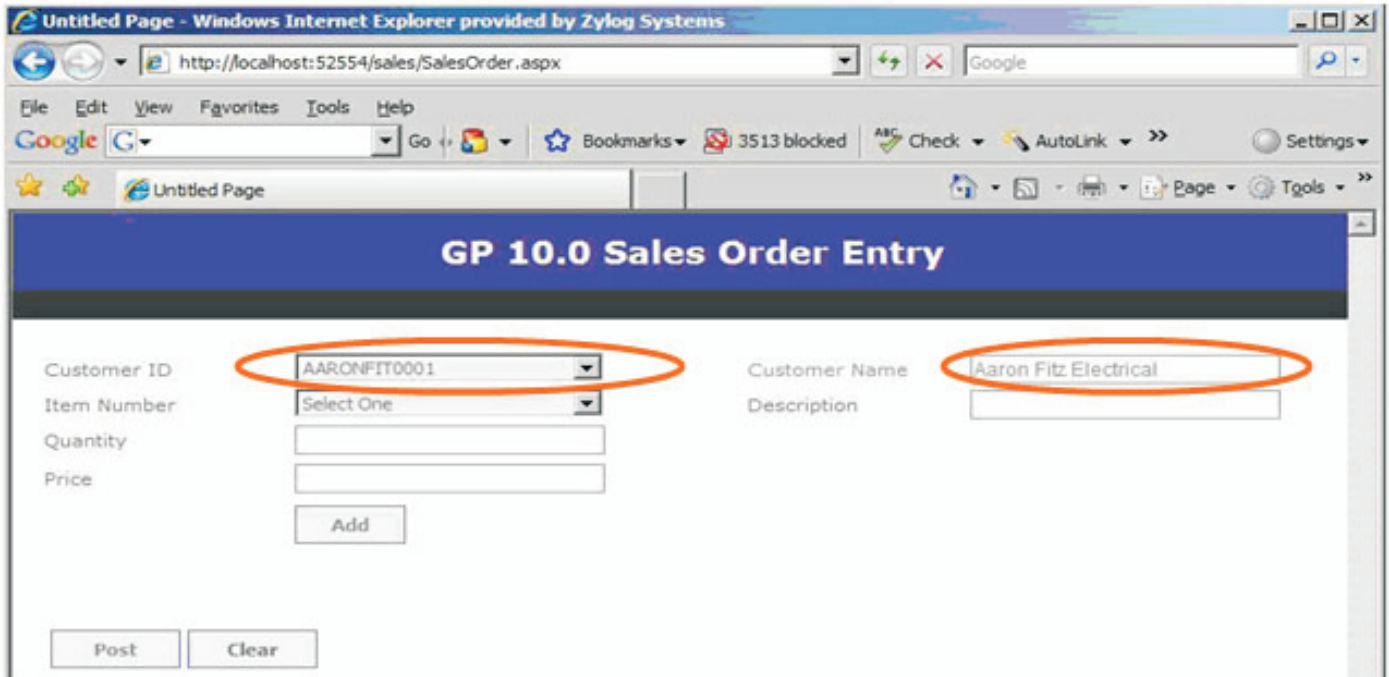
- *User/Customer can open the website from any location and create a sales order*

The screenshot shows a Windows Internet Explorer browser window displaying a web application titled "GP 10.0 Sales Order Entry". The browser's address bar shows the URL "http://localhost:52554/sales/SalesOrder.aspx". The application interface features a blue header with the title "GP 10.0 Sales Order Entry". Below the header, there is a form with the following fields and controls:

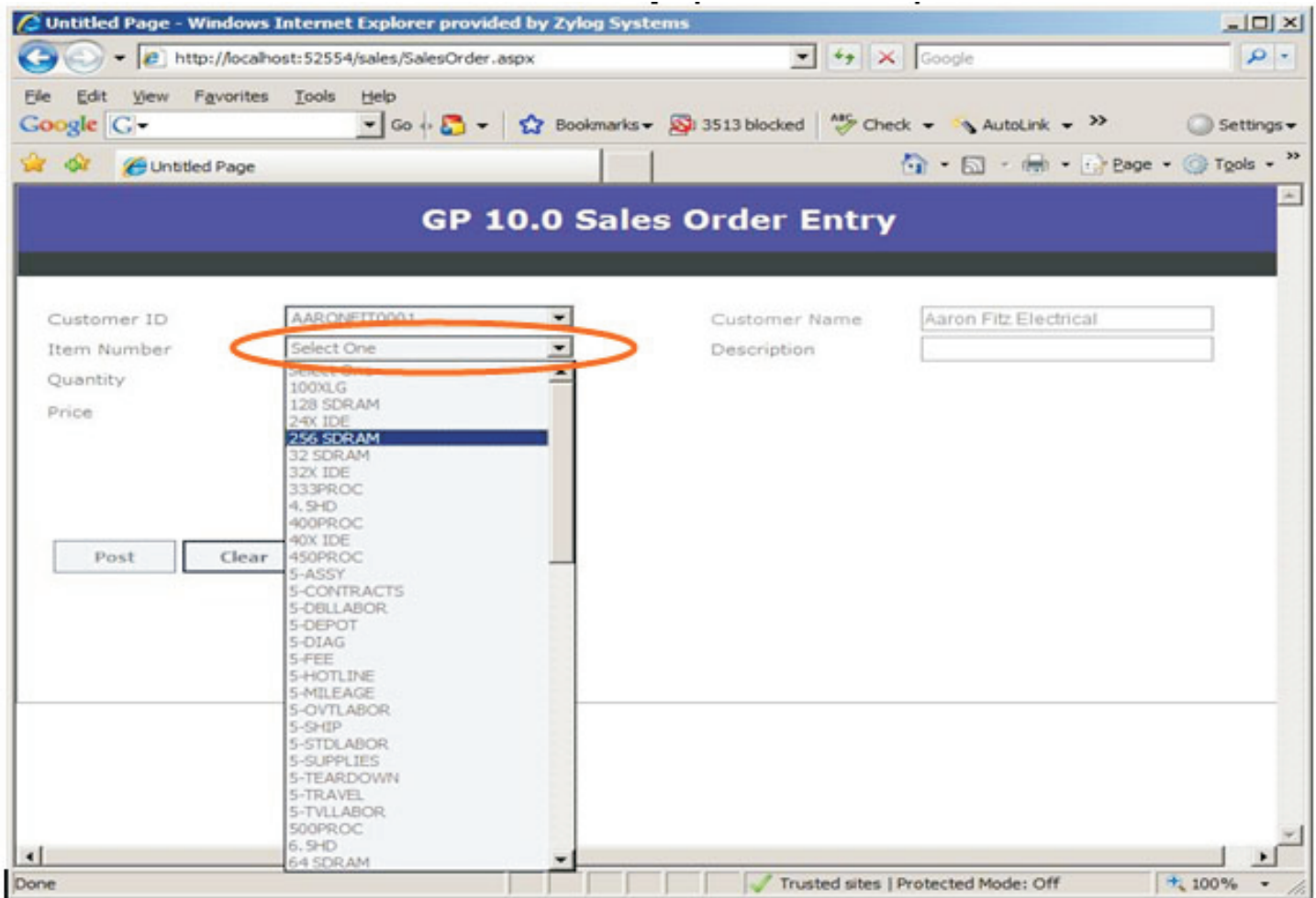
- Customer ID:** A dropdown menu with "Select One" selected.
- Item Number:** A dropdown menu with "Select One" selected.
- Quantity:** A text input field.
- Price:** A text input field.
- Customer Name:** A text input field.
- Description:** A text input field.
- Buttons:** An "Add" button is positioned below the Quantity and Price fields. At the bottom of the form, there are "Post" and "Clear" buttons.

The browser's status bar at the bottom indicates "Done", "Trusted sites", "Protected Mode: Off", and a zoom level of "100%".

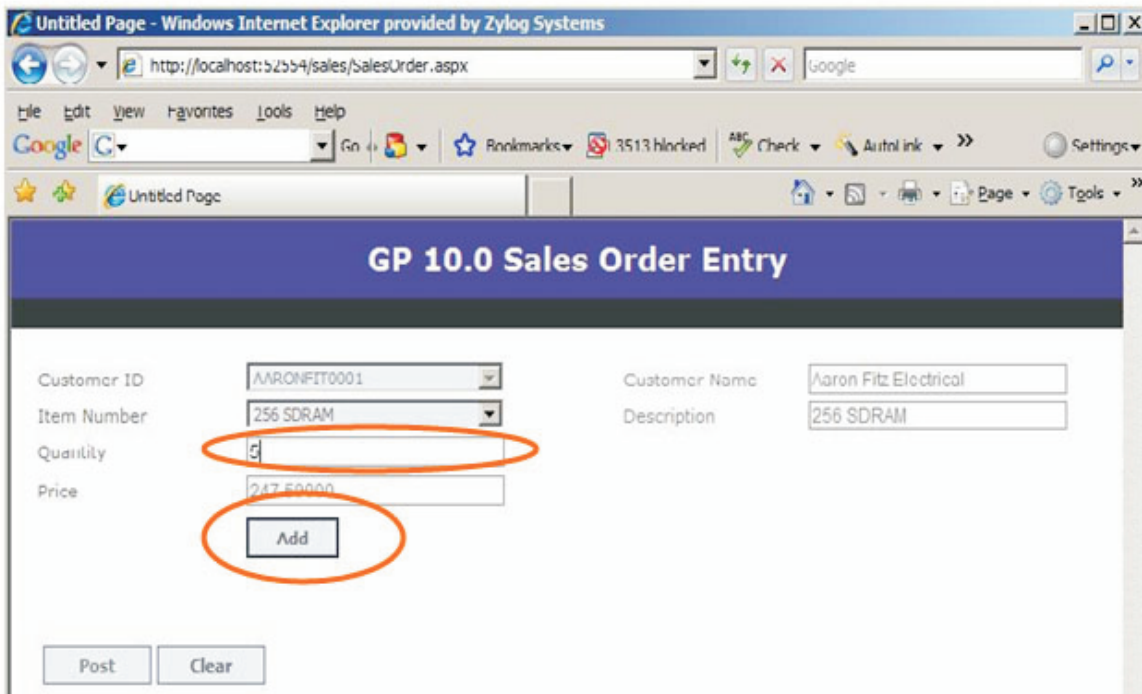
- Pick the customer id → Customer name will be displayed automatically



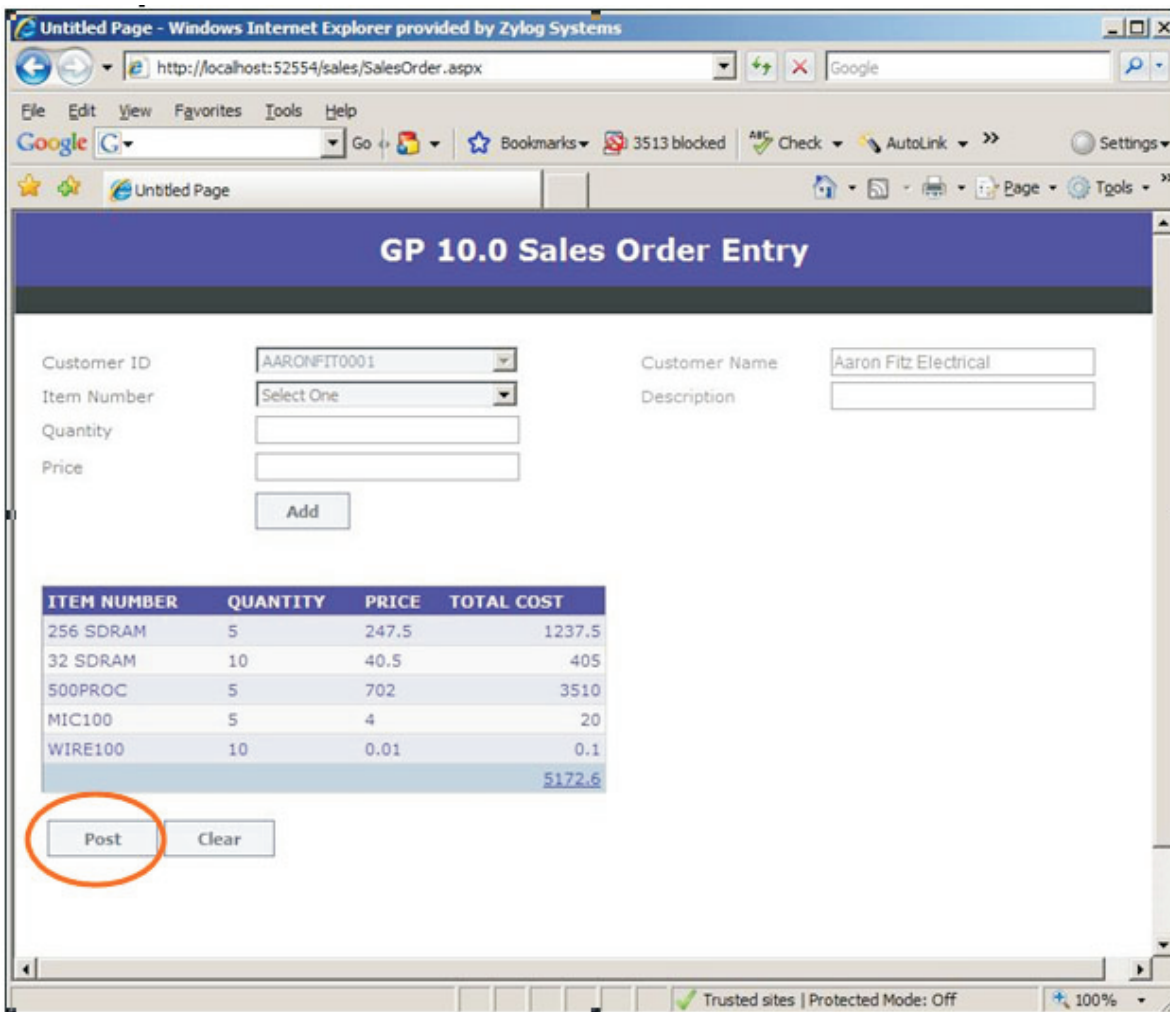
- Pick the item → Price of the item will be displayed automatically



- Specify the quantity → click on add



- Add different items and specify the required quantity → click on post all the information will be passed to the GP and will create a sales order in GP



- Sales order created in web will be displayed in GP

Item Number	D	U of M	Qty Ordered
256 SDRAM	<input type="checkbox"/>	Each	5
32 SDRAM	<input type="checkbox"/>	Each	10
500PROC	<input type="checkbox"/>	Each	5
MIC100	<input type="checkbox"/>	Each	5
WIRE100	<input type="checkbox"/>	Foot	10.00
	<input type="checkbox"/>		0.00

The GP- Sales order processing development framework enables rapid development and deployment on any industry standard GP Server.

## The Benefits

- No more manual entry into GP
- Save huge time when creating an order
- Link multiple web site forms to CRM to create order
- Automated Sales order Processing