

ZSL MS Dynamics Specialization

As a Microsoft Certified Partner, we are offering solutions /services for a wide range of Microsoft dynamics products like CRM, Axapta, Great Plains, Navision, RMS and SharePoint.



ZSL is a certified provider of Onshore, Offshore & Near shore technology Services. ZSL was ranked 275 for the year 2007 in the VAR Business 500 and Was recognized 45th among the fastest growing 100 companies by CRN Magazine.

ZSL has been a big asset to our business. Their project managers are very diligent in providing weekly project status reports showing work completed and work pending. The developers are very capable and efficient in producing the desired results. It is great to have a partner to work with like ZSL.

*Mike Garey
GT Innovation, Inc.*

Customization services

- Application Customization & Customized Reports.
- Installation & Configuration ,Integration & Implementation.
- Data Migration ,Web Services & Hosting.
- Training, Post Implementation support & Maintenance.
- Mobile Enablement of CRM & ERP Packages.

Our Mobility expertise

- Application Development in Pocket PC, Blackberry & Windows.
- Mobile/Wireless programming using MS .Net Framework.
- Implementing and supporting Remote data Processing applications for the Mobile Work Force

I am very happy with the prompt services provided by ZSL INC. The custom web application met the requirements set forth in the contract for a custom web application. C3SD plans on continuing to work with ZSL.INC in the future for custom web development.

*Michael Surmanian
C3 San Diego*

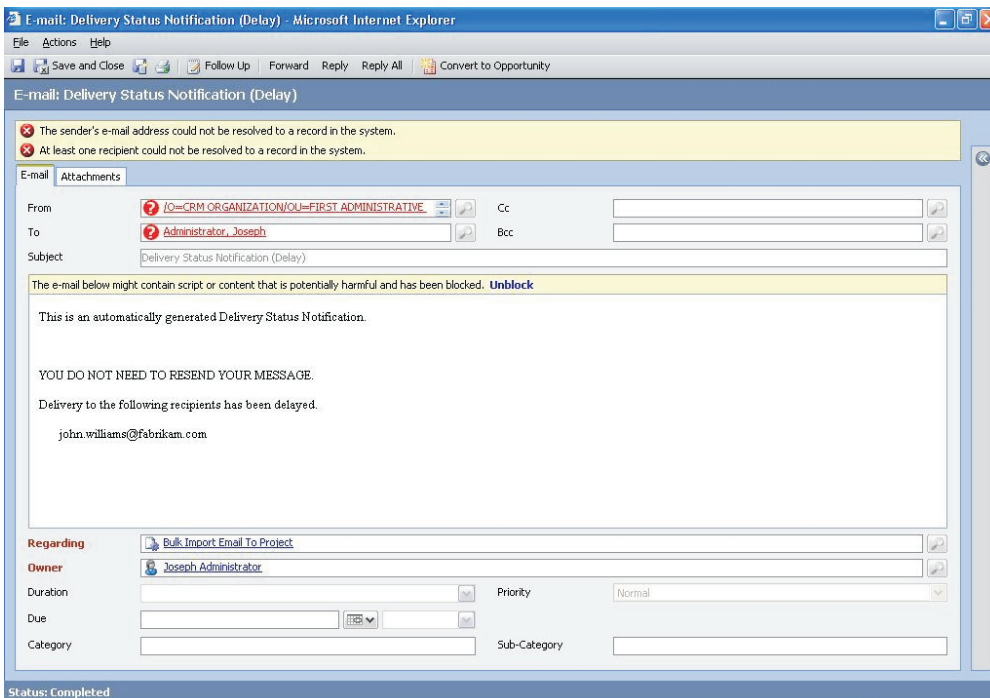
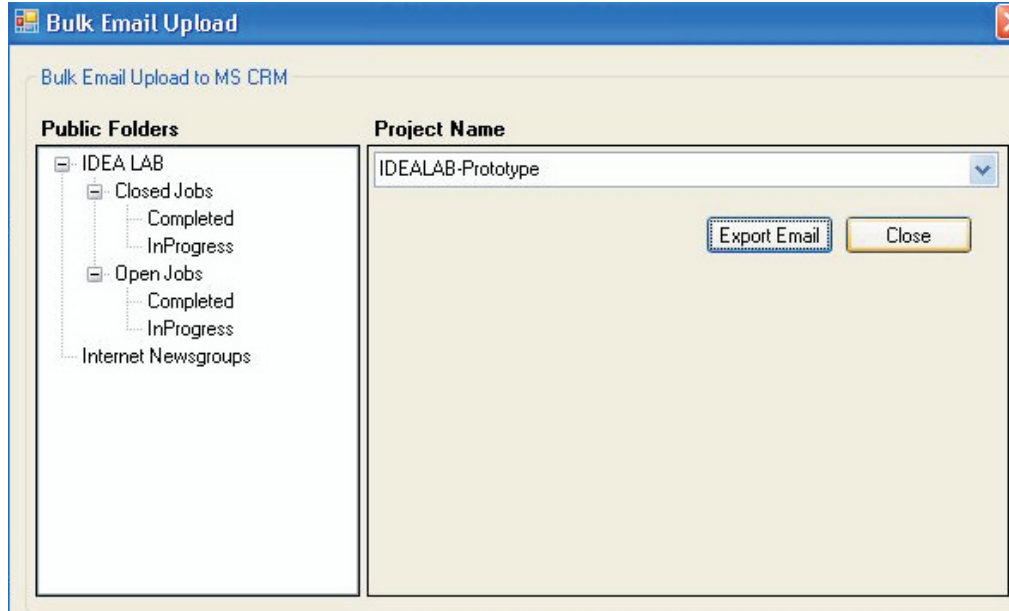
2007 VAR BUSINESS 500
Ranked 275 for the year 2007

CRN 2007 Fast Growth 100
Ranked 45 for the year 2007

Microsoft CRM Bulk Email Import

Companies create Project Entity basically for the Project Managers to track their emails against Projects in the systems instead of another entity. Normally the email history will be stored in a separate email Job Folders in outlook.

ZSL **Bulk Email Import** for Microsoft CRM is a Microsoft CRM compatible component that allows the user to bulk import the email and associate the archived emails against projects in the CRM system.



Benefits:

- Easy to track
- Complete view of the Project Related email communication
- Importing emails with attachment